



Looper&Drum Machine Owner's Manual



Precautions -----01
 Features -----02
 Start -----03
 Lay out -----04-05
 Instructions -----06-11
 Editor Software -----12-13
 Specifications -----14-15

Precautions

01

Please read the instructions carefully before using this product

Power Supply

Please use DC9V300mA power supply. Improper power supply may cause short circuit and equipment damage. Please disconnect the power supply for long-time no use.

Safety precautions

1. Please read the instructions carefully
2. Heed all warnings
3. It can only be used within the voltage and current range of this power supply
4. Please keep the equipment away from water source or place with high humidity
5. Please wipe the product surface with clean and dry cloth when cleaning
6. To avoid interference, please keep away from radio, TV or other equipment with magnetic field when using the product
7. Do not collide, throw or vibrate this product
8. Make sure there is no paper, plastic, metal or other solid object falls into any of the ventilation openings
9. Do not drop and subject the unit to shock and excessive pressure
10. Do not disassemble the equipment for removing internal parts or making any modifications

MADE IN CHINA



Features

02

1. 44.1kHz 24bit high-quality looper and drum machine
2. Up to 4 minutes of recording time per each track, 40 preset slots, and 160 minutes total recording capacity
3. 100 different drum grooves from 10 unique music styles. 10 types of metronome settings to choose from
4. EXT CTRL function supports external footswitch control (purchased separately)
5. Supports import/export recording via USB
6. The detail of recording is displayed by the progress bar on the screen
7. Separate footswitch for controlling looper and drummachine
8. Automatically save all recorded content when power off

Start

03

Connect the 9V power supply to the power connector

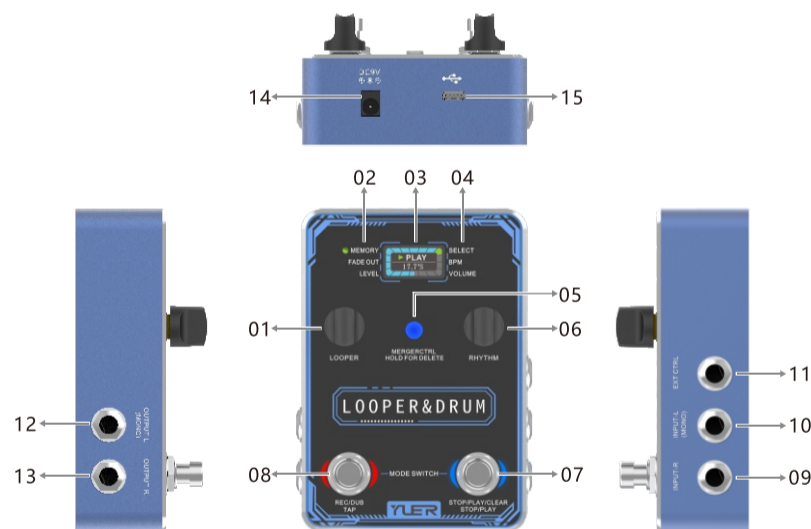
Connect the guitar to the input jack (LEFT) with an instrument cable

Connect the output interface of this equipment with amplifier or other effectors



Lay out

04



Lay out

05

- 01 **LOOPER**: LOOPER control. Select the position, volume level, and fade out time of the LOOPER
- 02 **LOOPER LED**: Indicates current LOOPER parameters
- 03 **Display Screen**: Display current status information
- 04 **RHYTHM LED**: Indicates current RHYTHM parameters
- 05 **MERGER CTRL**: Toggle LOOPER and drum machine to work independently or simultaneously. Hold to delete recorded tracks
- 06 **RHYTHM**: RHYTHM control. Select the rhythm type, speed, and volume level of the RHYTHM setting
- 07 **Right Footswitch**: Control the Playback, Stop and Delete in LOOPER mode; Play/Stop for RHYTHM
- 08 **Left Footswitch**: Control the Record, Dub and Playback in LOOPER mode; Tap tempo for RHYTHM
- 09 **INPUT RIGHT**: MONO audio input jack
- 10 **INPUT LEFT**: MONO audio input jack. (Connect both LEFT and RIGHT input to set up stereo input)
- 11 **EXT CTRL**: External stereo footswitch jack(See operation step 11)
- 12 **OUTPUT LEFT**: Mono output jack(Connect both output jacks to set up stereo output)
- 13 **OUTPUT RIGHT**: Mono output jack
- 14 **USB**: Type-C USB. Connect to computer for editor software, import/export recorded files, perform factory reset
- 15 **DC IN**: Power interface (9V500mA external positive and internal negative)

Instructions

06

LOOPER and RHYTHM modules

Users can switch between LOOPER and RHYTHM by pressing both footswitches simultaneously. The LED of LOOPER (Green)and RHYTHM(Red) will indicate current module.

LOOPER modules: Press LOOPER knob to select a function below:



MEMORY: LOOPER has 40 storage positions (MEM.1...40), Empty is the storage vacancy, choose the storage position by rotating LOOPER knob.



LEVEL: Playback volume level of the tracks. Ranges from -∞ to +6dB. If **OUTPUT CLIPPING** is displayed on the screen, please turn down the volume level of playback.



INPUT CLIPPING: When the input signal level is detected to be clipping, **INPUT CLIPPING** will be displayed on the screen. Please turn down the input level or the output level of your instrument.



Instructions

07

FADE OUT: Setting the time of fade out when the playback stops. Range from 1 to 5 seconds. **FADE OUT** function is set to off as default.



REC: Press LOOPER knob to select MEMORY. Rotate to an empty slot. Press left footswitch to start recording. The screen will display **REC** and timer will begin counting.



Playback: After current track recording is finished, press right footswitch to stop recording and begin Playback. Progress bar will display play time.

Dub: After current track recording is finished, press left footswitch to enter **Dub** mode. it will start recording while playing back previously recorded tracks. Press left footswitch again to finish recording and begin playback of all recorded tracks.



UNDO: If two or more tracks have been recorded, press and hold right footswitch for 2 seconds during playback to delete the last track. **UNDO** will be displayed on the screen.



Instructions

08

REDO: You can utilize REDO to recall the last track you deleted. After UNDO, press and hold right footswitch for 2 seconds to recall the deleted track. **REDO** will be displayed on the screen.



STOP: In playback mode, press right footswitch to stop playback. **STOP** will be displayed on the screen. You can press the right footswitch again to continue playing. You can also press left footswitch while in **STOP** mode to continue playing and DUB a new track.

CLEAR: In **STOP** mode, press and hold right footswitch for 2 seconds to clear all the tracks in the current slot. **EMPTY** will be displayed to indicate current slot is empty.

Notice:

1. If only one track is recorded, you can press and hold right footswitch for 2 seconds during recording to delete the track; if there are two or more tracks recorded, press and hold right footswitch for 2 seconds during recording to UNDO/REDO. If you would like to delete all tracks, you need switch to **STOP** mode then press and hold right footswitch to CLEAR.
2. In playback mode, you can press LOOPER knob to select MEMORY and navigate to desired tracks in slot.

Instructions

10

LOOPER+RHYTHM

When RHYTHM is off, while using the LOOPER to record, RHYTHM will start automatically in playback/DUB modes after the first track has recorded. You can turn on RHYTHM before recording, then switch to LOOPER to start recording. RHYTHM will run simultaneously with LOOPER. LOOPER and RHYTHM are two individual modules. The on/off of one will not affect the other.

MERGER CTRL

MERGER CTRL button can be accessed to play/stop both LOOPER and RHYTHM simultaneously. *Press MERGER CTRL button to activate, LED button will turn blue. *Enter RHYTHM module to set the rhythm type and BPM. *Switch to LOOPER module, press left footswitch to start recording. Before starting, a count-in bar will be played then the recording and drum machine will start simultaneously. **REC** will be displayed on the screen.

Tips:

1. The minimum recording capacity is one bar. Switching to Playback/Dub mode when the recording is less than one bar, the recording will not stop until current bar is finished.
2. When the recorded time is more than one bar and less than 1.5 bar, switching to Play back/Dub will only save the first full bar. RHYTHM and Playback/DUB will then return to the start of the bar.

Editor Software

12

Supports import/export looper files and Factory Reset via editor software. Please enter relevant page of <https://www.loganbpm.com> for download.

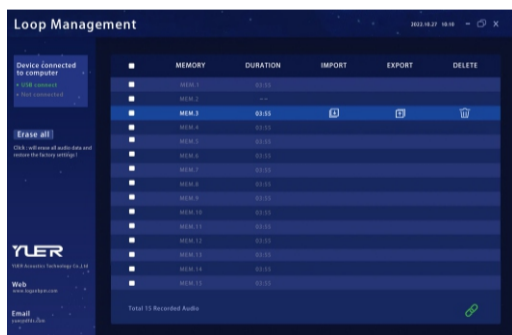
Download and install the editor software and audio drivers. Connect with computer via USB to access the editor software control.

LOOPER&DRUM When connecting with computer, **USB connect** will be displayed on the screen, The can be controlled by the software only, Buttons and footswitches will not respond in this mode.



Interface of editor software

List on the right hand side shows 40 save slots in MEMORY, Slot name in dark indicates the looper file and its duration; Slot name in grey indicates empty slot.



Specifications

14

Algorithm	Maximum recording time of each track	4 minutes
	Maximum number of recording tracks in each slot	No limitation
INPUT	INPUT	
	Type	Two 1/4" unbalanced mono audio jacks
	IN impedance	1 Meg ohm
	Maximum Input Level	3 dBu
	A/D Conversion	
	Sampling Rate	44.1 kHz
	Sampling Accuracy	24 bit
	Dynamic	103dB
	Frequency	20Hz~20KHz +0/-1dB

Instructions

09

RHYTHM modules

Press RHYTHM knob to select a function below:



In the RHYTHM mode, the left footswitch will blink in RED and BLUE.

SELECT: Rotate the RHYTHM to select from 100 different drum grooves from 10 styles of music as well as 10 styles of metronome.

VOLUME: Adjust the play volume level of RHYTHM, Default value is 10, which corresponds to no attenuation or increase to original signal.

BPM: Show BPM (Beat per minute) of RHYTHM. The LED in the light the left footswitch will blink to indicate current BPM of RHYTHM.

On/Off: In RHYTHM mode, press right footswitch once to turn on/off RHYTHM. The LED in the right footswitch will indicate the on/off of RHYTHM.

TAP TEMPO: In RHYTHM mode, press left footswitch two or more times at the desired tempo to set the BPM of the current RHYTHM. The LED above the left footswitch will indicate current BPM (Beats per minute).

Tips: While RHYTHM mode is on, you can switch to SELECT mode to select between different grooves. However, unlike the LOOPER, the RHYTHM setting will not switch until current bar has finished.

Instructions

11

Notice:

1. When a LOOPER file is recorded, if you switch the rhythm type to a different time signature, such as 4/4 to 3/4, LOOPER and RHYTHM may not work normally as they cannot be justified with each other.
2. When MERGER CTRL is activated, press right footswitch to access Play/Stop of both LOOPER and RHYTHM. Pressing and holding right footswitch will clear all the tracks and RHYTHM will stop automatically.

External Footswitch

supports external footswitch control via EXT CTRL port. (External footswitch purchased separately)



1. Control switching between LOOPER mode and RHYTHM mode when double pegs are pressed simultaneously.
2. UP pegs select the drum machine rhythm up in RHYTHM mode and MEMORY up in LOOPER mode.
3. DOWN pegs select the drum machine rhythm down in RHYTHM mode, and MEMORY down in LOOPER mode.

Editor Software

13

Import: Click on the to import the audio file from computer to current slot, If loop file already exists in current slot, you can choose to replace the previous file.

Export: Click on the to export loop file from current slot to computer, If current slot is empty, the icon will turn grey and cannot be clicked.

Delete: Click on the icon to delete looper file in current slot. If the slot is empty, the icon will turn grey and cannot be clicked.

MERGE: Press SHIFT/CTRL and left click on the files to choose multiple files simultaneously. You can import/output/delete selected files.

RESET: Click on to reset LPOOPER&DRUM to factory settings.

Notice:

1. The exported audio file from the LOOPER recording, without the RHYTHM sound.
2. Deleting a looper file from a slot will set the volume, BPM, rhythm type or other parameters of back to default settings.

Specifications

15

OUTPUT	OUTPUT	
	Type	Two 1/4" unbalanced mono audio jacks
	IN impedance	470 ohm
	Maximum Input Level	3 dBu
	A/D Conversion	
Dynamic	106dB	
Frequency	20Hz~20KHz +0/-1dB	
EXT CTRL	USB	
	Type	TYPE-C USB
	EXT CTRL	
Type	1个1/4 "TRS	
Other	Power Supply	DC9V/300mA
	Size	125mmX87mmX35mm
	Weight	430g